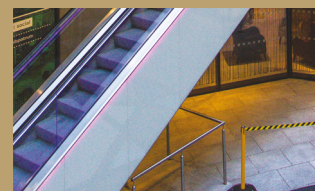
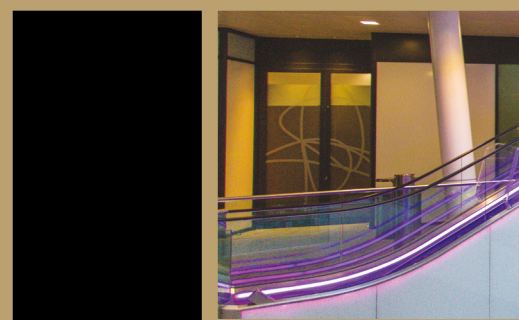
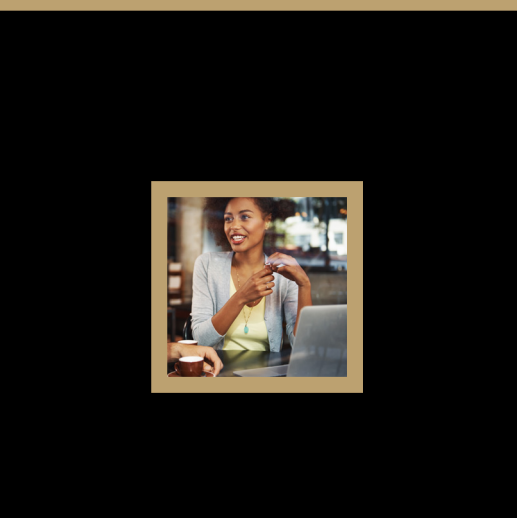


RETAIL/RESTAURANT UNITS TO LET

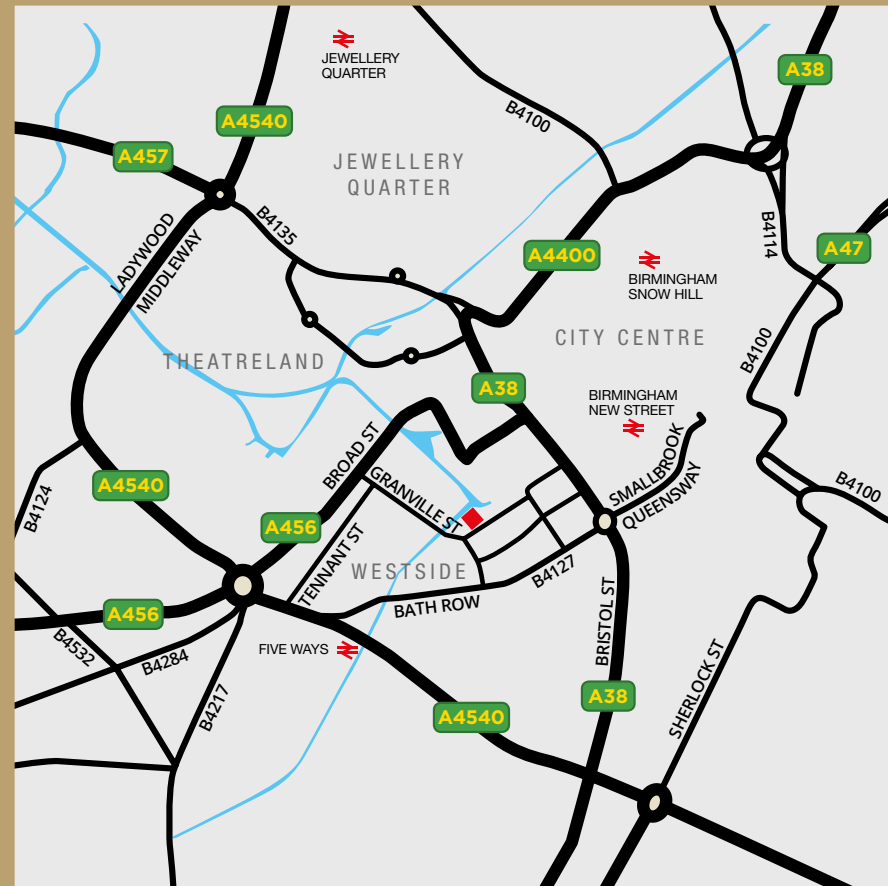
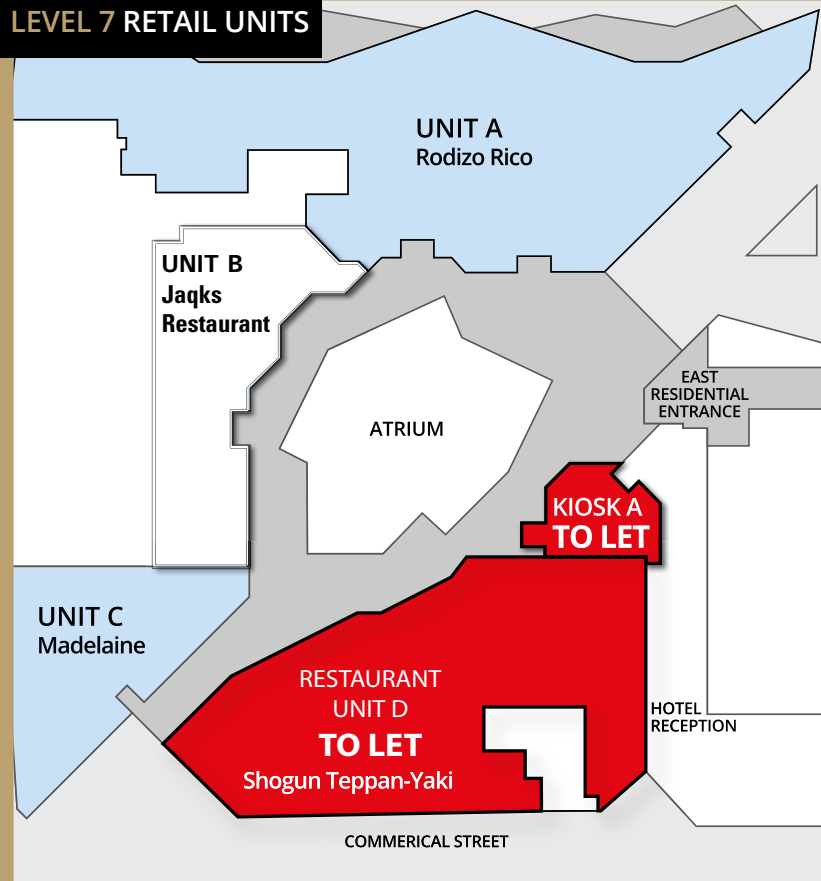
THE CUBE

191 WHARFSIDE STREET
BIRMINGHAM B1 1RN

THE ULTIMATE LANDMARK IN BIRMINGHAM CITY CENTRE



LEVEL 7 RETAIL UNITS



	Sq ft	Sq m	Quoted Rent	Rates Payable	Service Charge
KIOSK A	182	16.9	£19,500	To be assessed	Nil
RESTAURANT D*	3,694	343.2	£65,000	£28,980	£31,678

*Possibility of split - costs on application

A place to indulge senses, recharge batteries and simply unwind and relax, this iconic landmark provides unrivalled panoramic views across Birmingham City Centre

Thanks to its central location the Cube couldn't be simpler, in the heart of the City next to the Mailbox the main entrance is via Commercial Street.

For further details of available retail units to let along with terms please contact the sole agents.

IAN HUGHES

ianh@rhtretail.co.uk

0121 212 7802

ROWLEY HUGHES THOMPSON
PROPERTY CONSULTANTS
www.rhtretail.co.uk
0121 212 7800